

Did you know that the first Christmas card was made and posted in 1843?



Solution to word search on page 1



Find 10 Stars in the picture

- NOLLAIG SHONA - HAPPY CHRISTMAS



- Angel
- Bible
- Camel
- Christmas
- Comet
- Donkey
- God
- Hut
- Jesus
- Joseph
- Kings
- Mary
- Nativity
- Ox
- Palm
- Sheep
- Shepherd
- Star

Word Search

N	A	T	I	V	I	T	Y	M	S
S	J	K	I	N	G	S	S	L	T
A	O	O	B	B	E	T	H	A	A
M	X	C	S	I	H	L	E	P	R
T	Y	A	T	E	B	E	E	L	Y
S	R	M	T	E	P	L	P	E	E
I	A	E	U	H	M	H	E	G	K
R	M	L	H	E	G	O	D	N	N
H	J	E	S	U	S	M	C	A	O
C	D	R	E	H	P	E	H	S	D

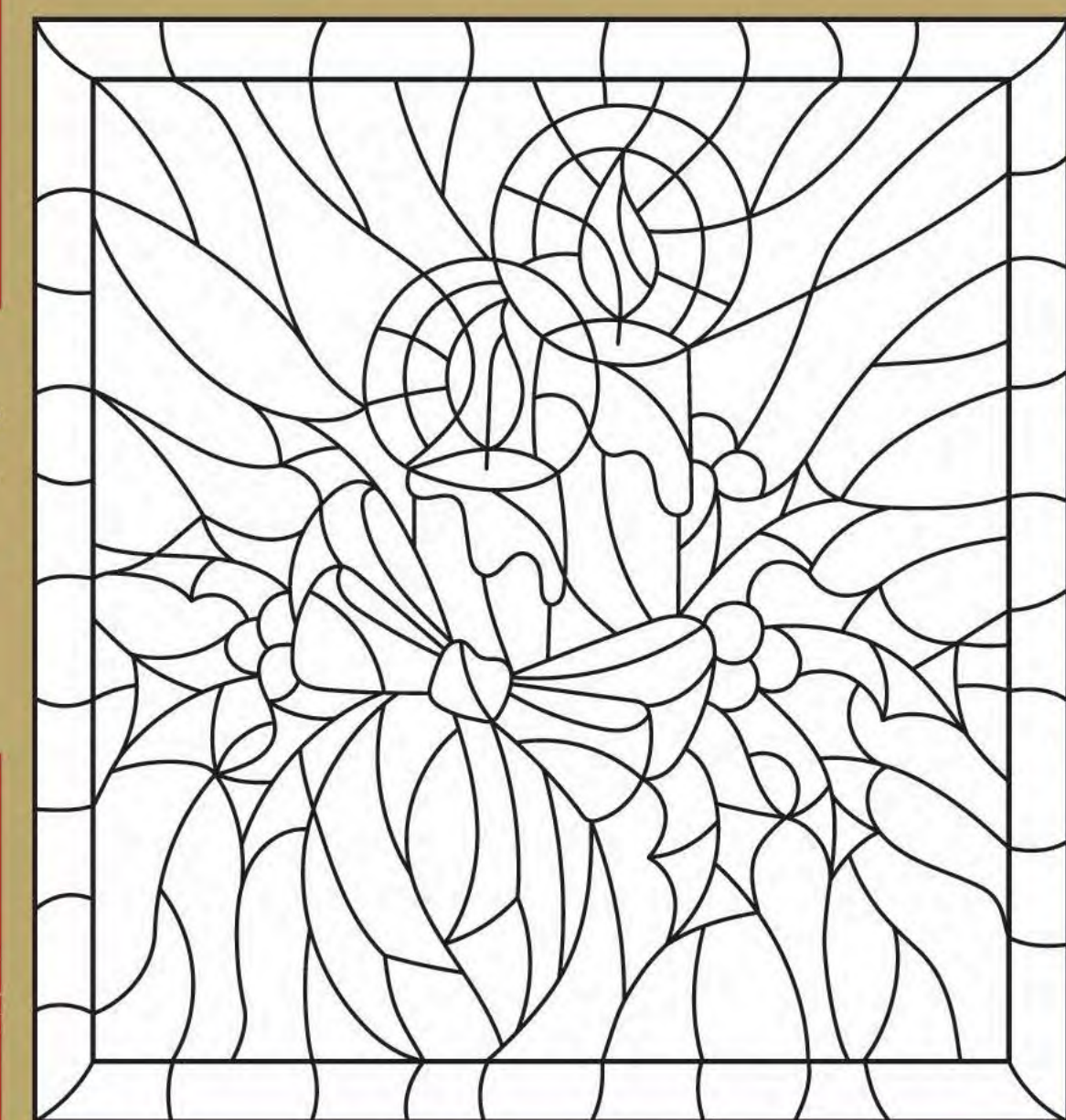
The Christian feast of Christmas marks the birth of Jesus Christ in the town of Bethlehem over 2000 years ago. Most people celebrate Christmas on 25 December. However, some countries celebrate it later, in early January. The Irish for Christmas is *Nollaig*. It is a time for feasting and fun and for the giving and receiving of presents.

I SPY GAME



Traditionally in Ireland one large candle was placed in the window on Christmas Eve as a symbol of welcome for the Holy Family.

Use your crayons or coloured pencils to colour in the Christmas candles decorated with holly and a bow.



A Victorian Christmas in Muckross House, 1868

'A Christmas tree was made in the Drawing-room and covered with toys for the children of the labourers and neighbours – 103 children. They had a good tea at 4pm, toys were distributed and then they enjoyed an exhibition of a magic lantern by the Rev. C.E. Wright.'

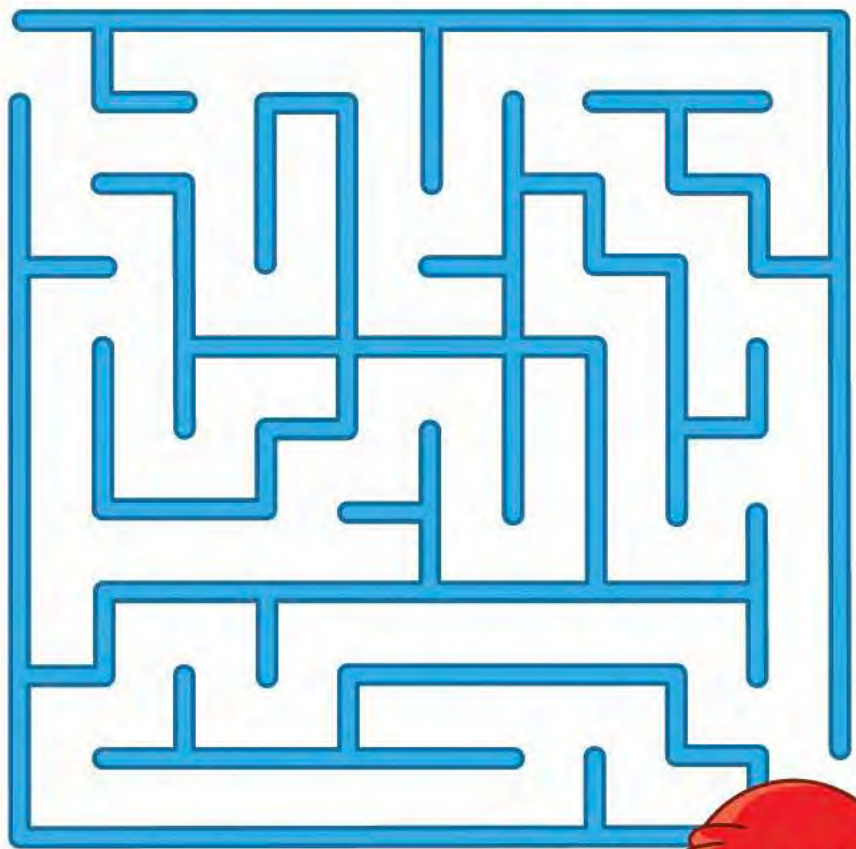
Diary Sir Edward A.W. Keane, 8 January 1869.

Scan this QR code to view our Christmas Video.



© Trustees of Muckross House, Killarney, CLG. 2023

Let's help Santa to find his hat



The Christmas Cracker is said to have been invented in 1847 by a London baker called Thomas Smith



Santa did not always wear red! Up until the early 20th Century Santa Claus was often depicted wearing green or blue clothes.



The English Queen Victoria and her husband Albert popularised the German tradition of the Christmas tree in the 1840s.

This fashion was followed by the wealthy.

In Ireland many homes did not have a Christmas Tree until the 20th century. Holly and ivy were used to decorate houses instead.

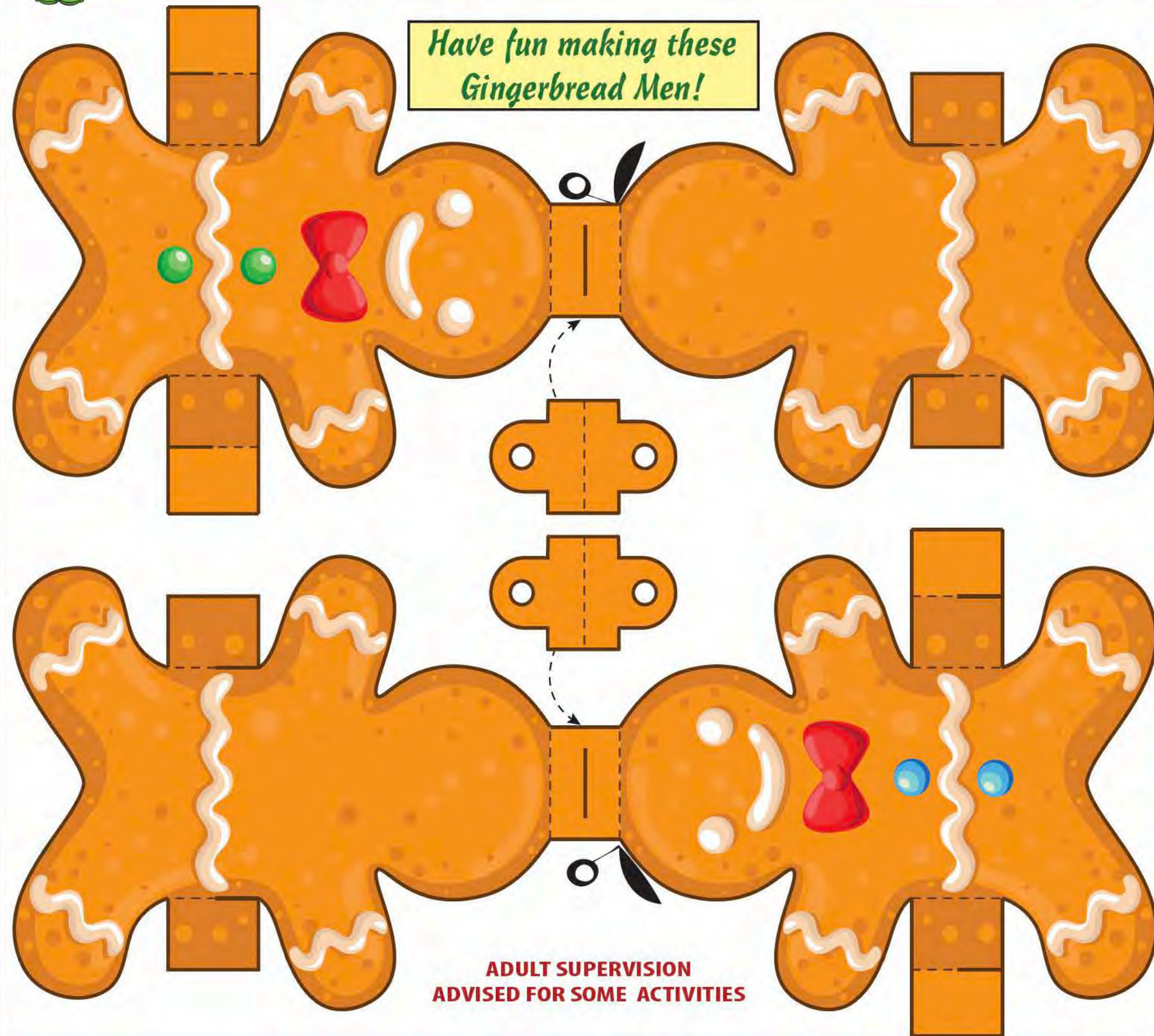


Solution to 'Find 10 Stars' page 4



Decorate your Christmas tree

DRAW A LINE FROM EACH DECORATION TO ITS CORRECT PLACE ON THE TREE



Have fun making these Gingerbread Men!

ADULT SUPERVISION ADVISED FOR SOME ACTIVITIES



Déan an Cód Mearfhreagartha seo a scanadh chun féachaint ar ár bhfiseán faoin Nollaig.



Christmas Miracles

It is often said that, at the stroke of midnight on Christmas Eve, animals briefly gain the power of human speech.

Others claim that cows and sheep bow down at midnight in honour of the birth of Jesus.

Hello!

Happy Christmas!



Christmas Cross Word